



Barbara Ana
Designs



Les voyages du père Noël

2ème partie

Grille de broderie au point de croix



Les voyages du père Noël

Barbara Ana Astray Mendez

Toile: Toile de lin Zweigart 12 fils/cm, coloris Dirty Linen (326)

Format brodé: 24,2 cm x 24,2 cm (152 x 152 points)

Point de croix:

- Brodé en 2 brins sur 2 fils de toile.

Point de piqûre:

- Brodé en 1 brin de 3371.

Point de nœud:











- L'œil du père Noël est brodé en 1 brin de Mouliné 3371. Enrouler le brin 2 fois autour de l'aiguille.

LEGENDE

Centrage de la grille:

se référer à la grille d'ensemble
pour placer chaque partie individuelle

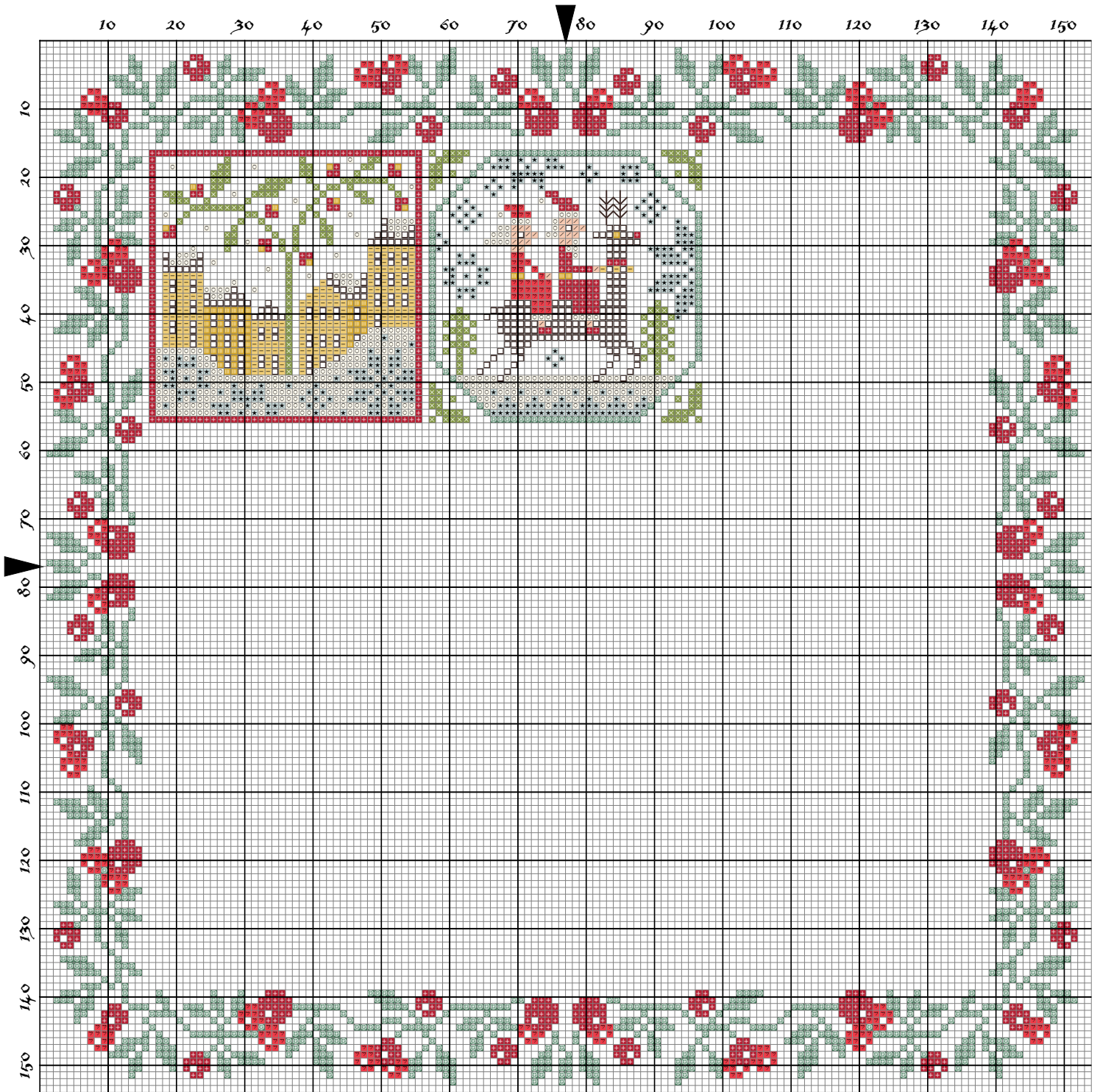
Mouliné DMC

-  DMC-304
-  DMC-469
-  DMC-501
-  DMC-676
-  DMC-712
-  DMC-928
-  DMC-3371
-  DMC-3801
-  DMC-3852
-  DMC-3856

—— DMC-3371

○ DMC-3371

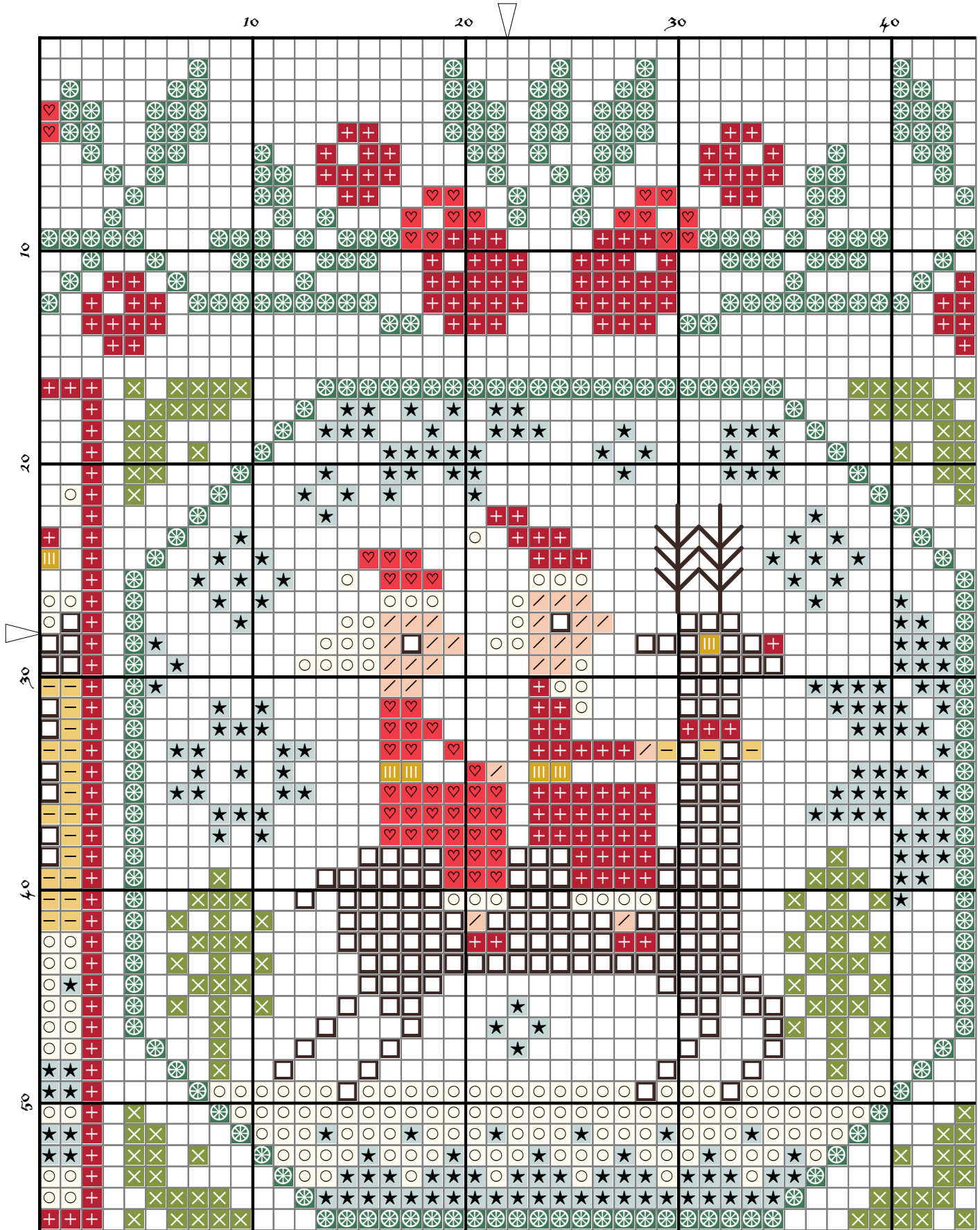
Ce modèle est réservé à votre usage personnel et ne peut être reproduit que sous forme de broderie. Ne peut pas être revendu comme modèle ou comme kit, ni rediffusé, même à titre gratuit. © 2020 Barbara Ana Designs



2020 Barbara Ana designs

Centrage de la grille





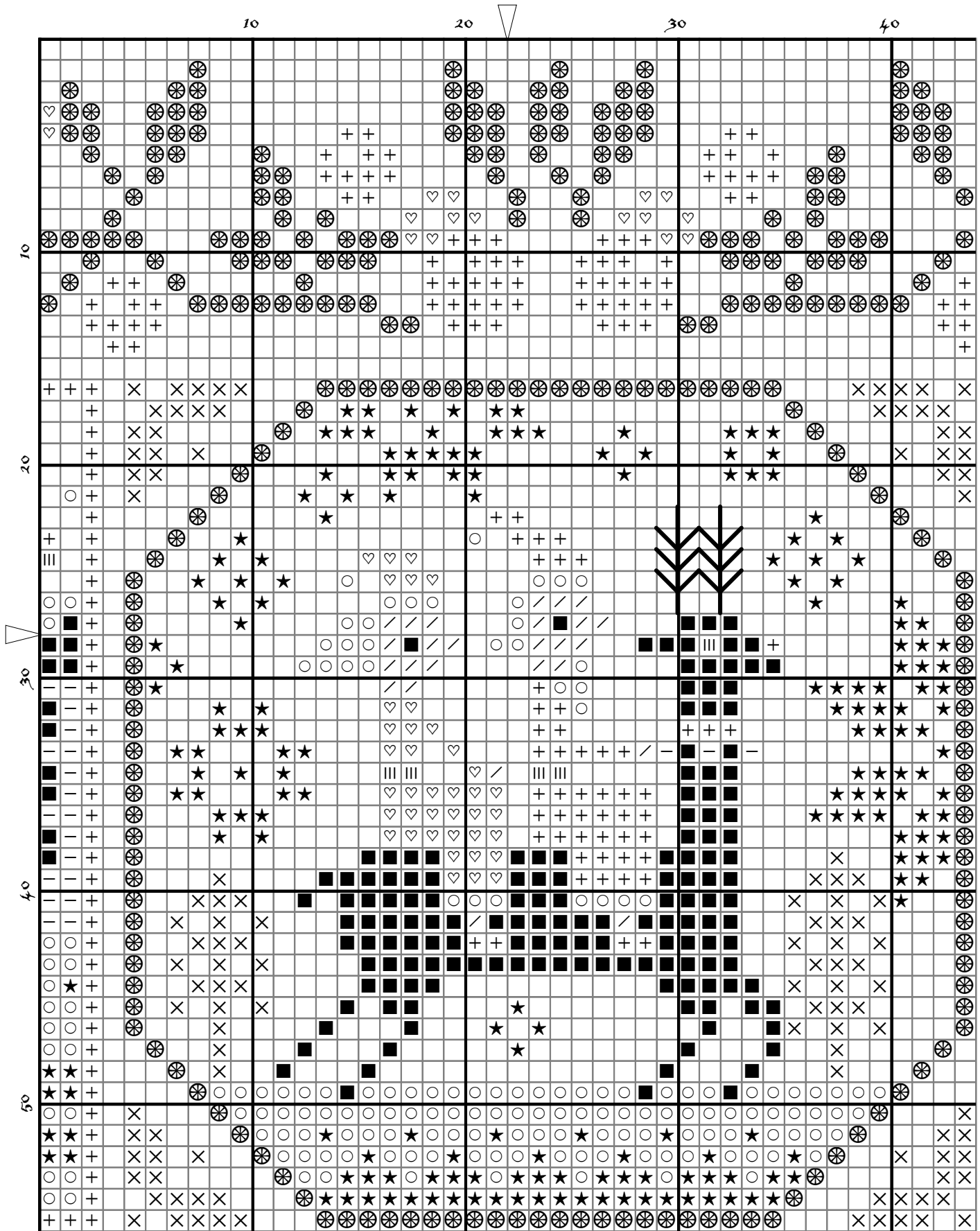
2020 Barbara Ana designs

Legend:

- | | | | | |
|---------|---------|---------|----------|----------|
| DMC-304 | DMC-501 | DMC-712 | DMC-3371 | DMC-3852 |
| DMC-469 | DMC-676 | DMC-928 | DMC-3801 | DMC-3856 |

Backstitches:

DMC-3371



2020 Barbara Ana designs

Legend:

- | | | | | | | | | | |
|--|---------|--|---------|--|---------|--|----------|--|----------|
| | DMC-304 | | DMC-501 | | DMC-712 | | DMC-3371 | | DMC-3852 |
| | DMC-469 | | DMC-676 | | DMC-928 | | DMC-3801 | | DMC-3856 |

Backstitches:

— DMC-3371