



Barbara Ana
Designs

Grille mystère Noël 2021- 1ère partie

Barbara Ana Astray Mendez

Toile: Etamine Murano Lugana 12 fils/cm de Zweigart, coloris Colonial blue (522), ou toute toile à broder de votre choix de couleur bleu/gris moyen ou ton lin nature.

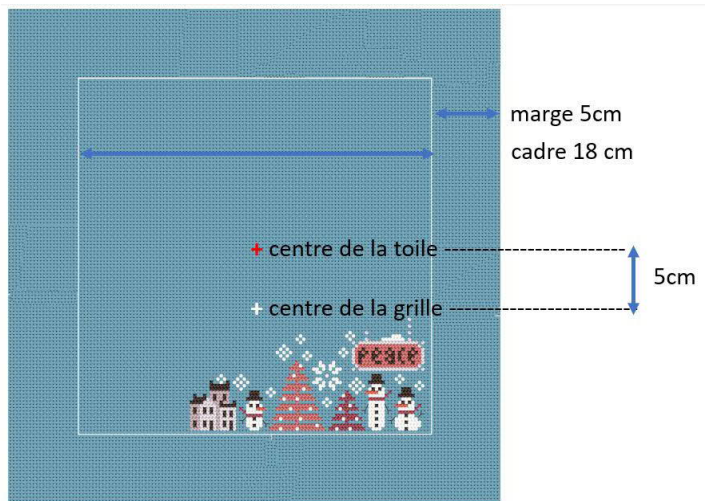
Format brodé: 16,7 cm x 11,5 cm -105 x 72 points

Encadrement : cadre carré 18 x 18 cm

Format de toile: En incluant la toile visible au dessus de la broderie, et une marge de 5 cm de chaque côté pour l'encadrement, le format de toile recommandé est de 28 x 28cm cm

Positionnement :

Pour une toile de 28 x 28 cm, positionner le centre de la broderie (grille) 5 cm plus bas que le centre de la toile afin de laisser plus de toile vierge visible en haut. Le bas de la broderie s'aligne avec le bas du cadre.

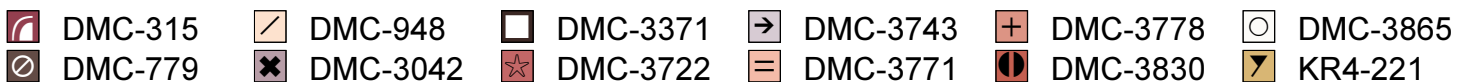


Fils à broder:

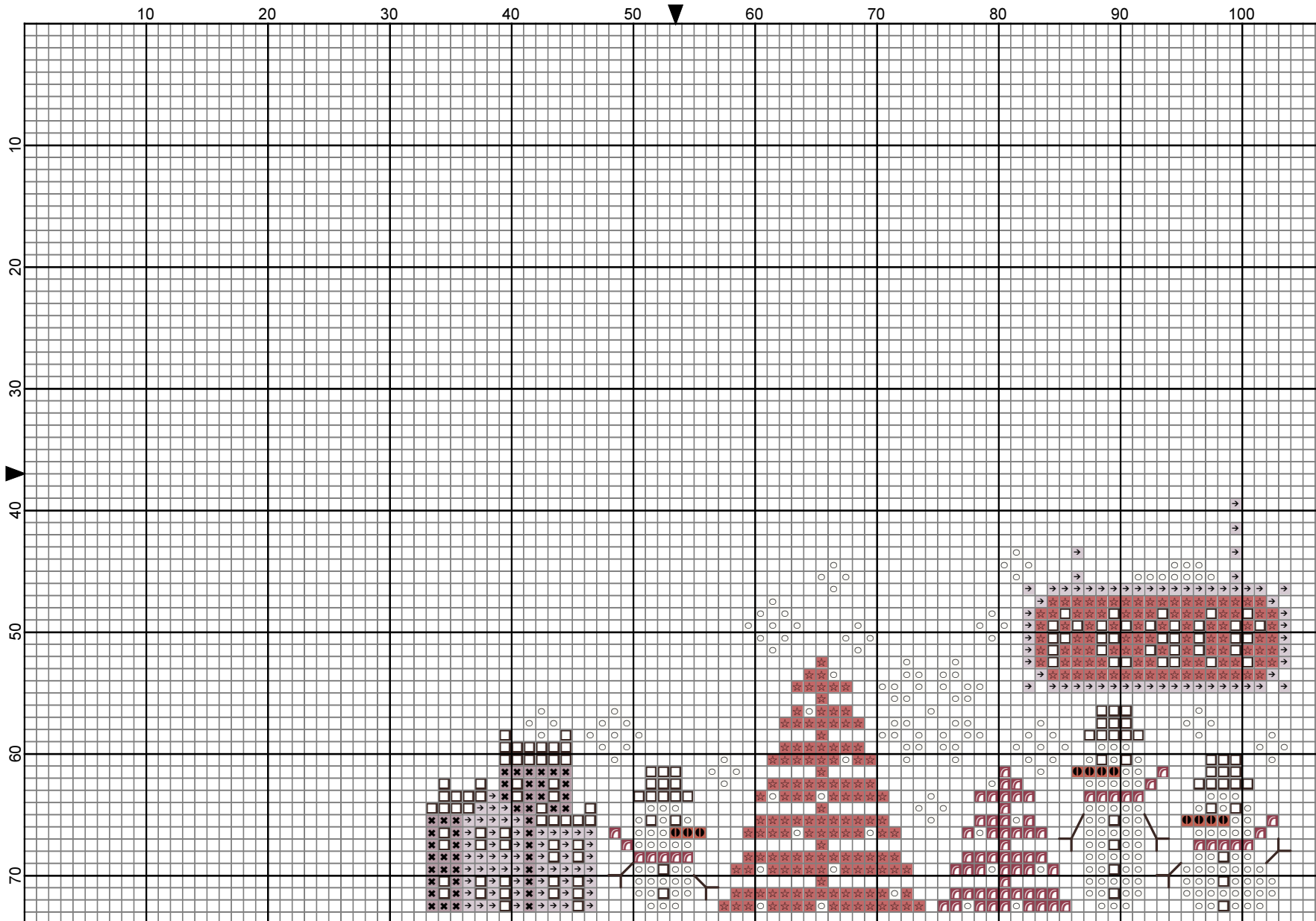
- Mouliné DMC
- Fil métallisé doré (vieil or) Kreinik Very Fine Braid #4 Antique Gold #221









Point de croix: - brodé en 2 brins sur 2 fils de toile. 1 seul brin pour le file métallisé Kreinik.

Point de piqûre: - brodé en 1 brin de DMC 3371

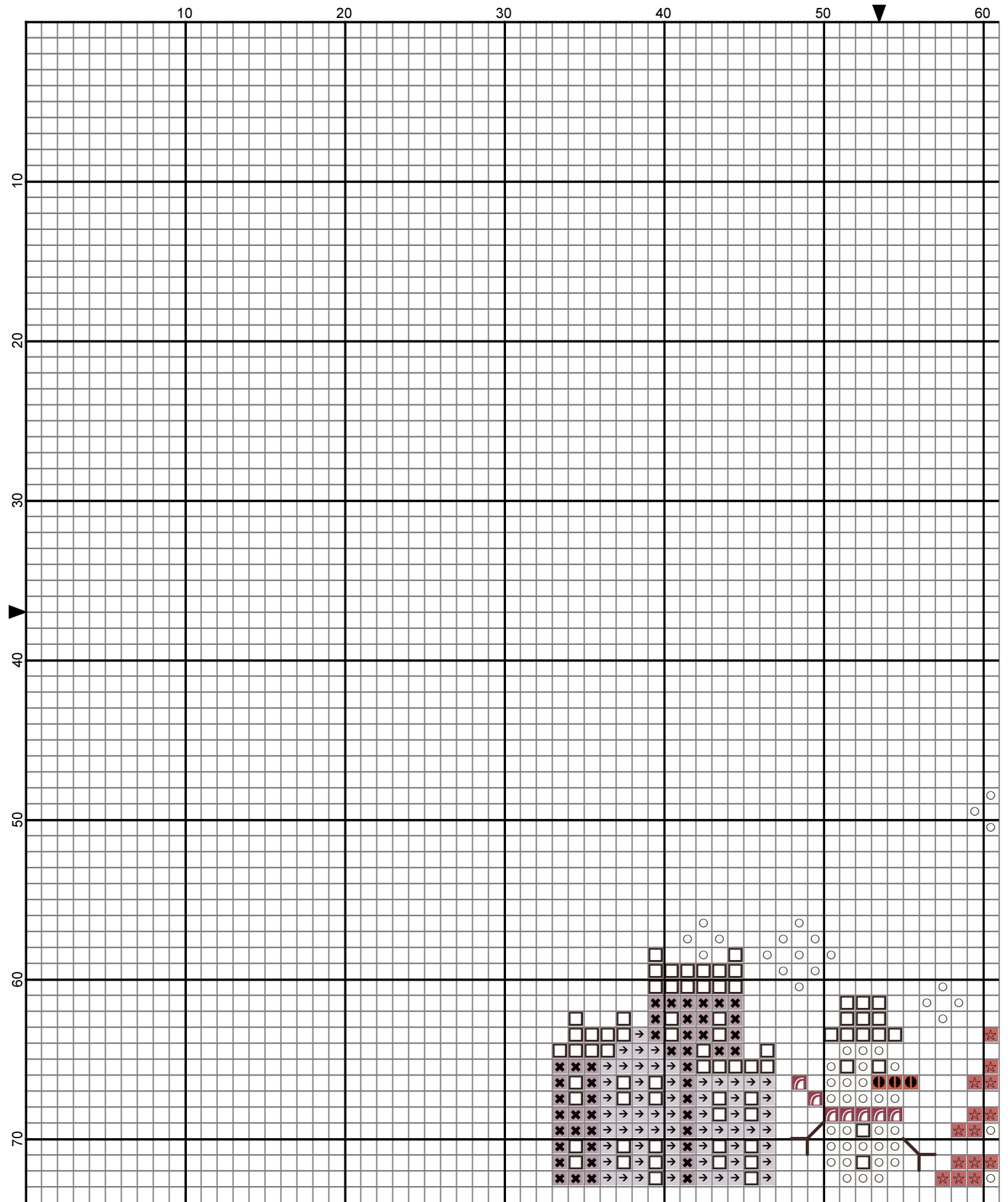


Ce modèle est réservé à votre usage personnel et ne peut être reproduit que sous forme de broderie. Ne peut pas être revendu comme modèle ou comme kit, ni rediffusé, même à titre gratuit. © 2021 Barbara Ana Designs



- Legend:
-  DMC-315
 -  DMC-3042
 -  DMC-3371
 -  DMC-3722
 -  DMC-3743
 -  DMC-3830
 -  DMC-3865
- Backstitches:
-  DMC-3371

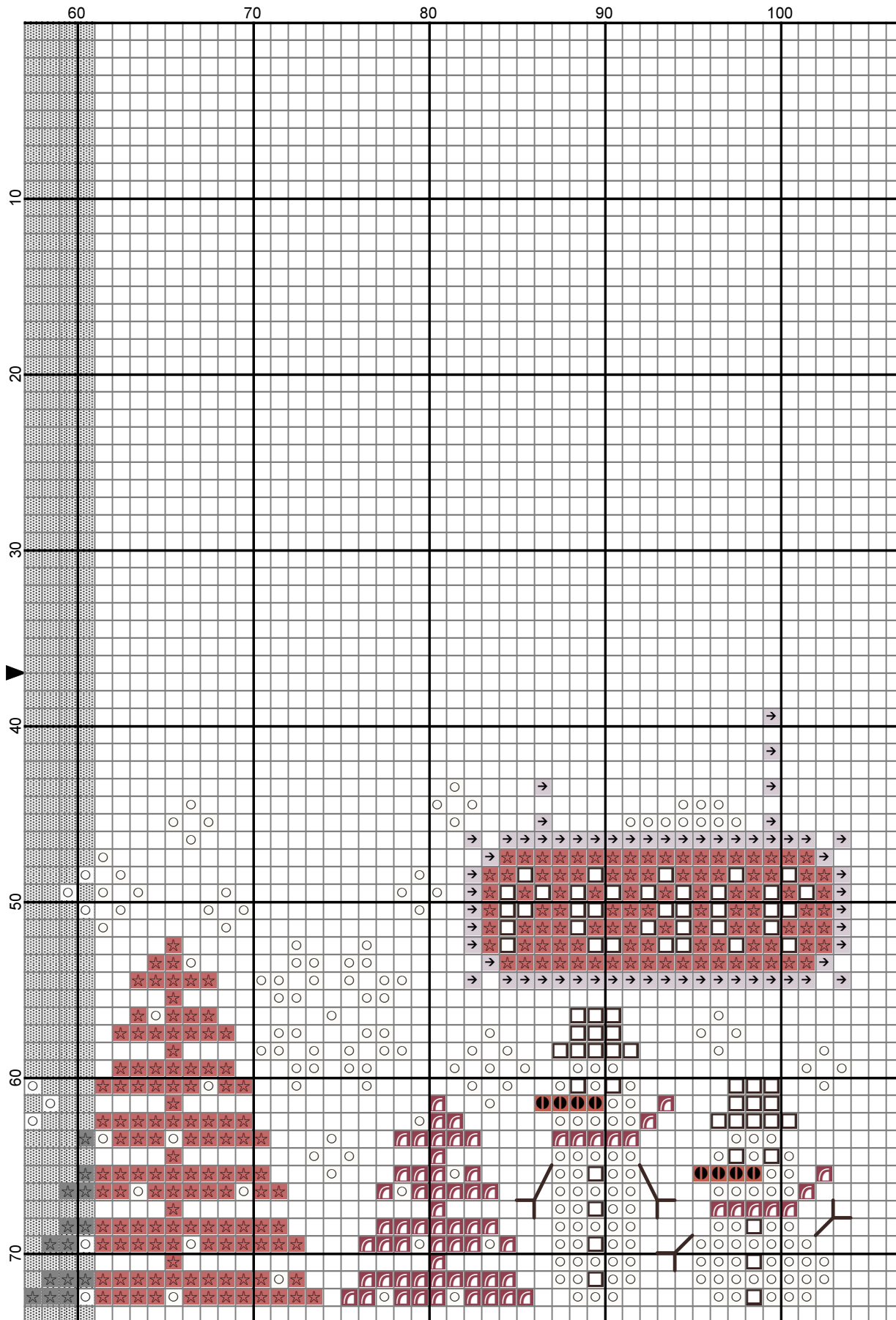
2021 Barbara Ana designs



2021 Barbara Ana designs

Legend:

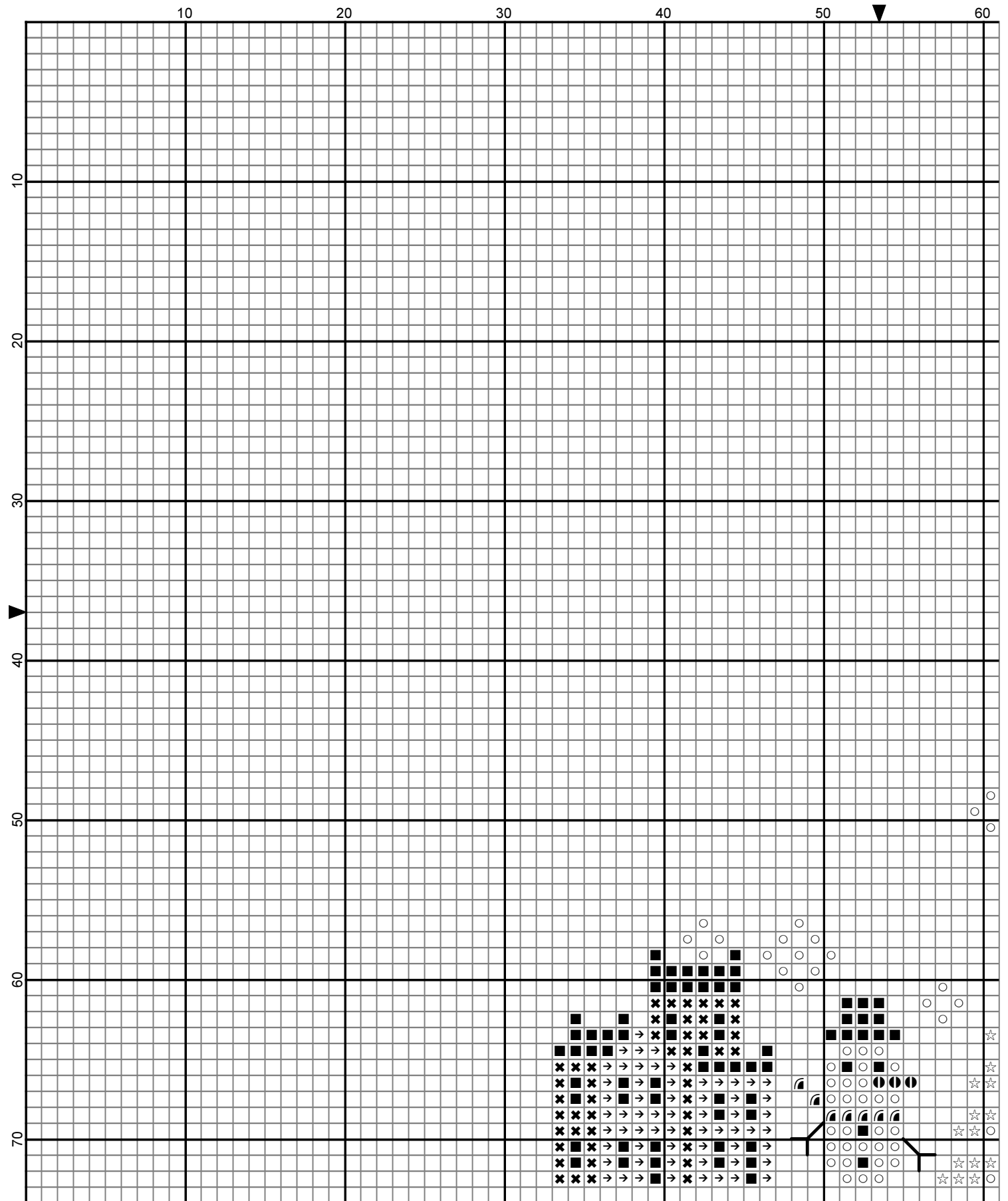
- | | | | | | | | |
|--|----------|--|----------|--|----------|--|----------|
| | DMC-315 | | DMC-3371 | | DMC-3743 | | DMC-3865 |
| | DMC-3042 | | DMC-3722 | | DMC-3830 | | |



2021 Barbara Ana designs








Backstitches:

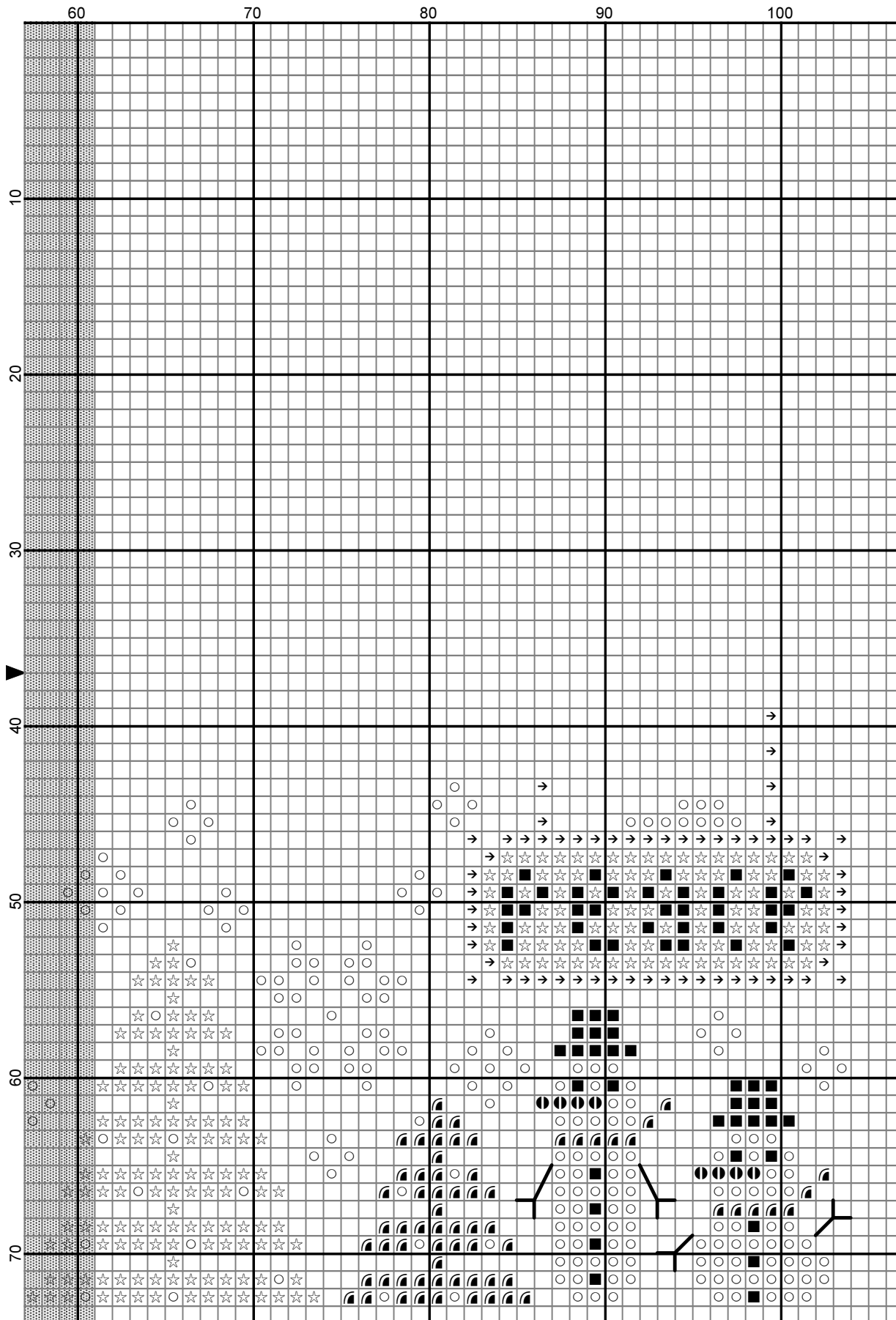
— DMC-3371



2021 Barbara Ana designs

Legend:

- | | | | | | | | |
|--|----------|---|----------|---|----------|---|----------|
|  | DMC-315 |  | DMC-3371 |  | DMC-3743 |  | DMC-3865 |
|  | DMC-3042 |  | DMC-3722 |  | DMC-3830 | | |



2021 Barbara Ana designs

Backstitches:

— DMC-3371