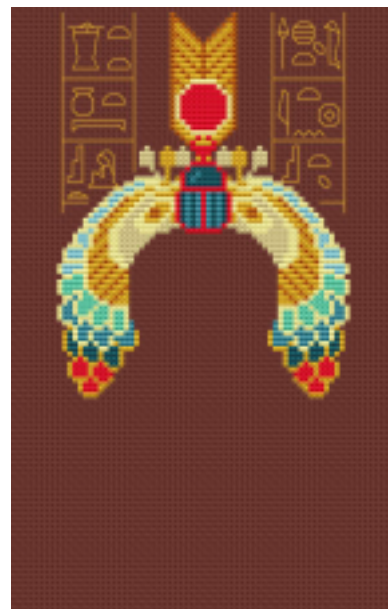




Barbara Ana  
Designs



# Grille mystère Cleo

Barbara Ana Astray Mendez

## 1ère partie

**Toile:** Toile de lin Belfast 12 fils/cm de Zweigart, coloris Dark Chocolate (9024)

**Format brodé:** 11.6 cm x 18.6 cm – 73 x 117 points

**Fils à broder:**

- Mouliné DMC
- Fil métallisé doré Rainbow Gallery Petite Treasure Braid (PB01 Bright gold) ou fil métallisé doré de votre choix

INSTRUCTIONS :

**Point de croix:**

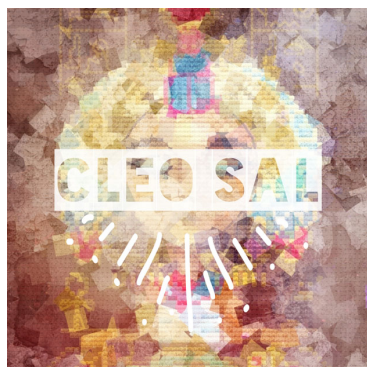
- 2 brins de Mouliné, brodé sur 2 fils de toile
- 1 brin pour le fil métallisé Rainbow Gallery Petite Treasure Braid

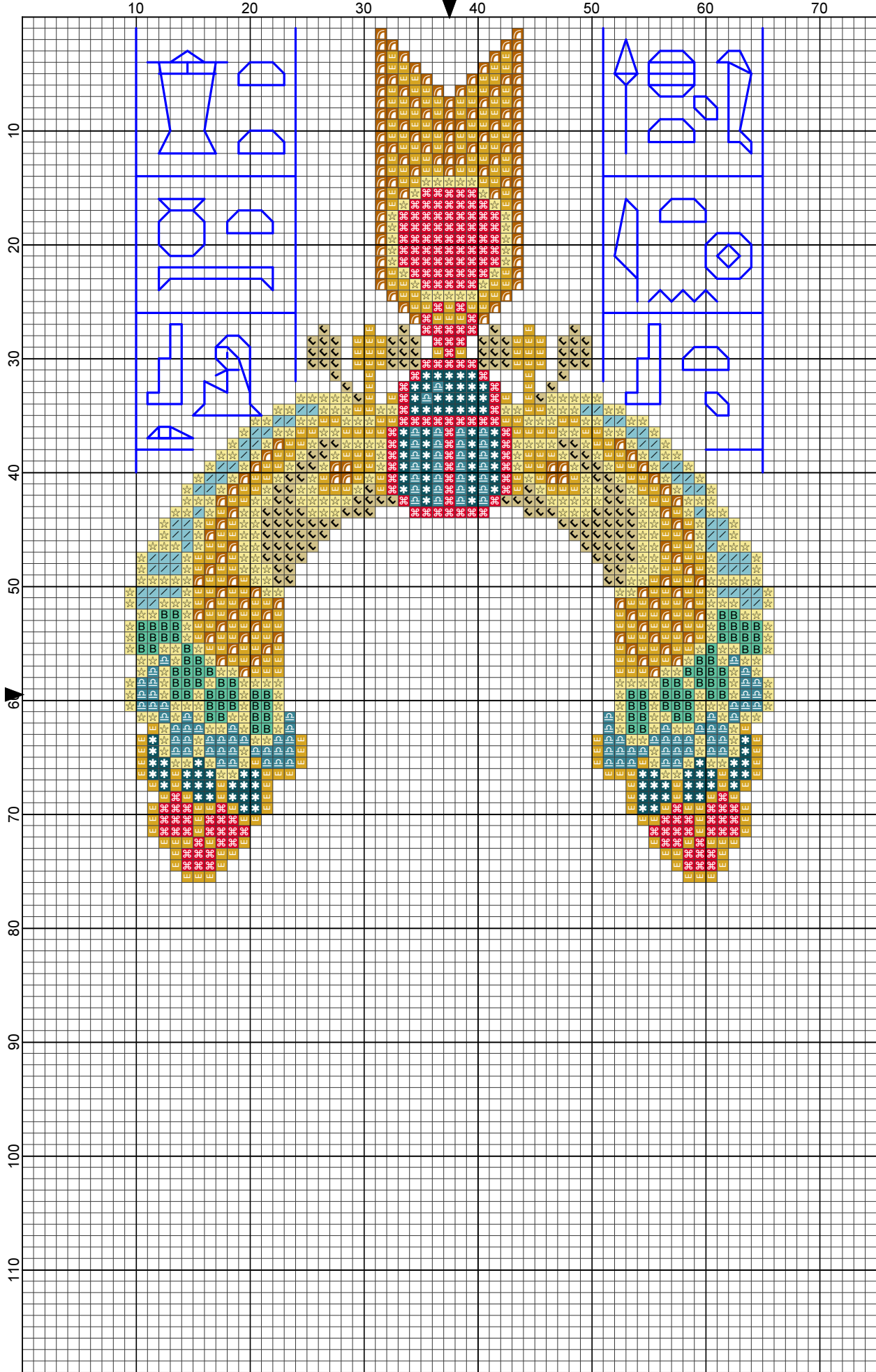
**Point de piqûre:**

- 2 brins de DMC 3371 (lignes rouges) et DMC 3852 (lignes bleues),
- 1 brin de fil métallisé Rainbow Gallery Petite Treasure Braid (lignes vertes)



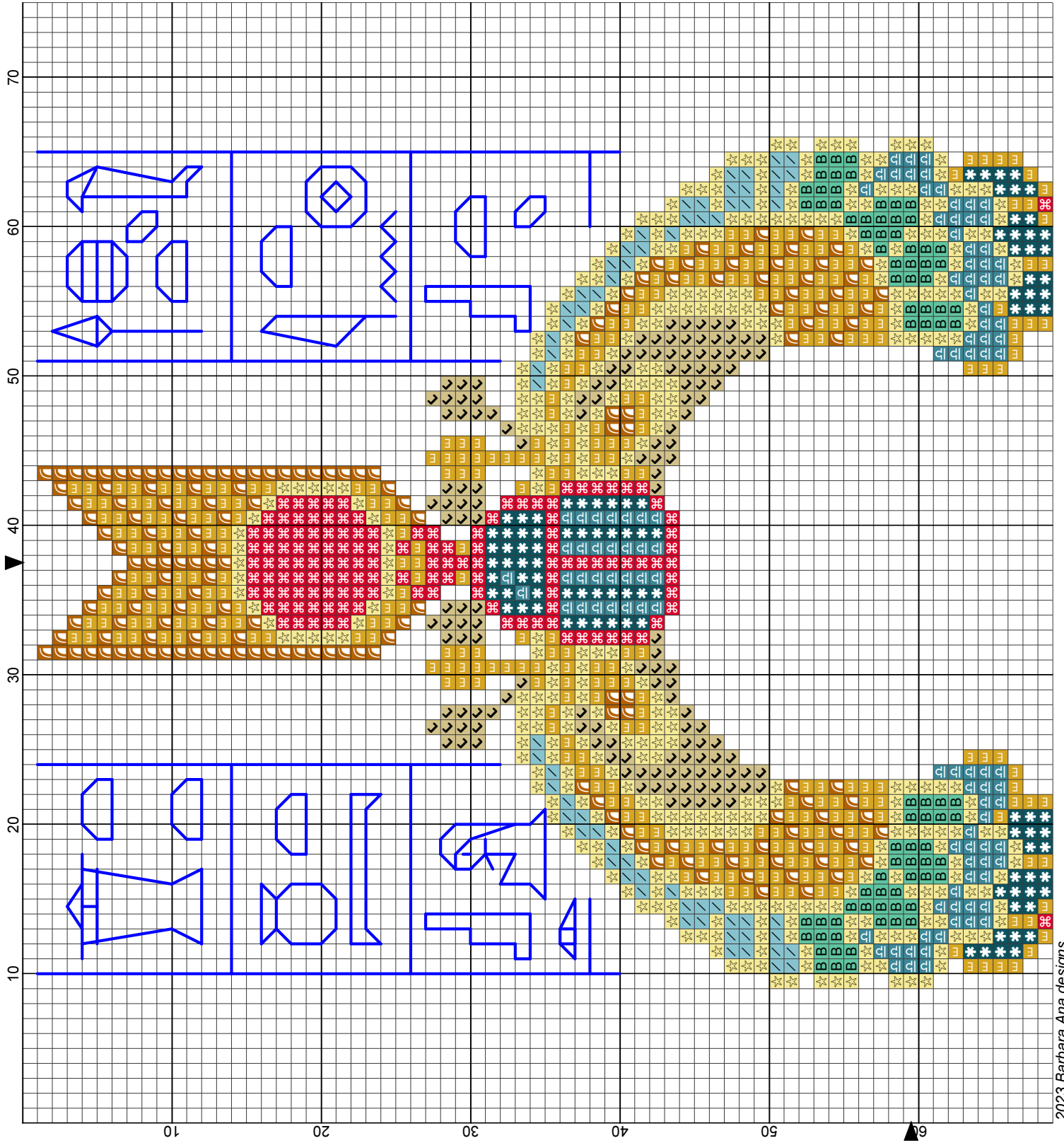
— DMC-3371 — DMC-3852 — PTB-PB01

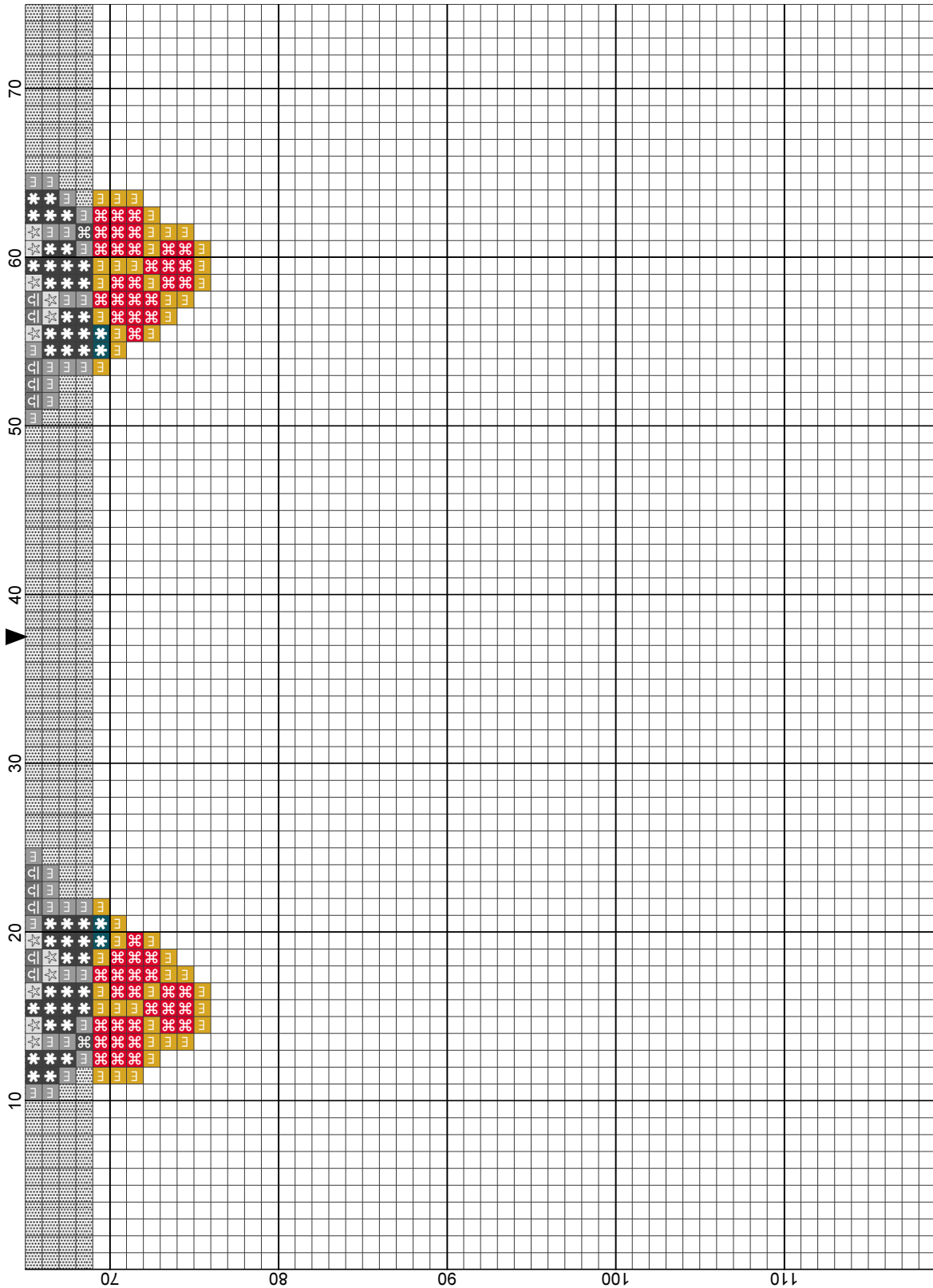




2023 Barbara Ana designs

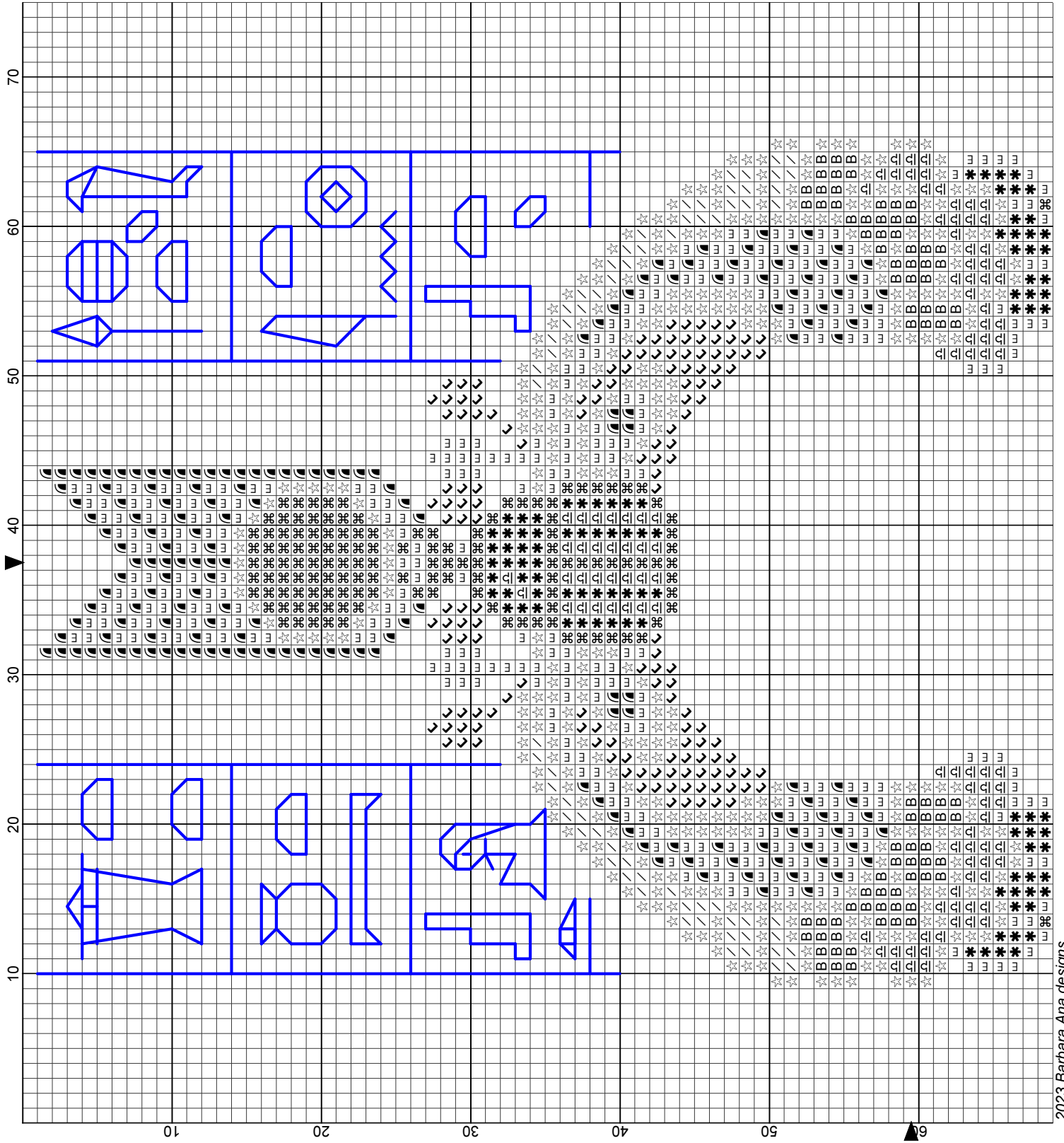
- Legend:
- DMC-598
  - DMC-666
  - DMC-727
  - DMC-780
  - DMC-958
  - DMC-3808
  - DMC-3810
  - DMC-3852
  - PTB-PB01
- Backstitches:
- DMC-3852

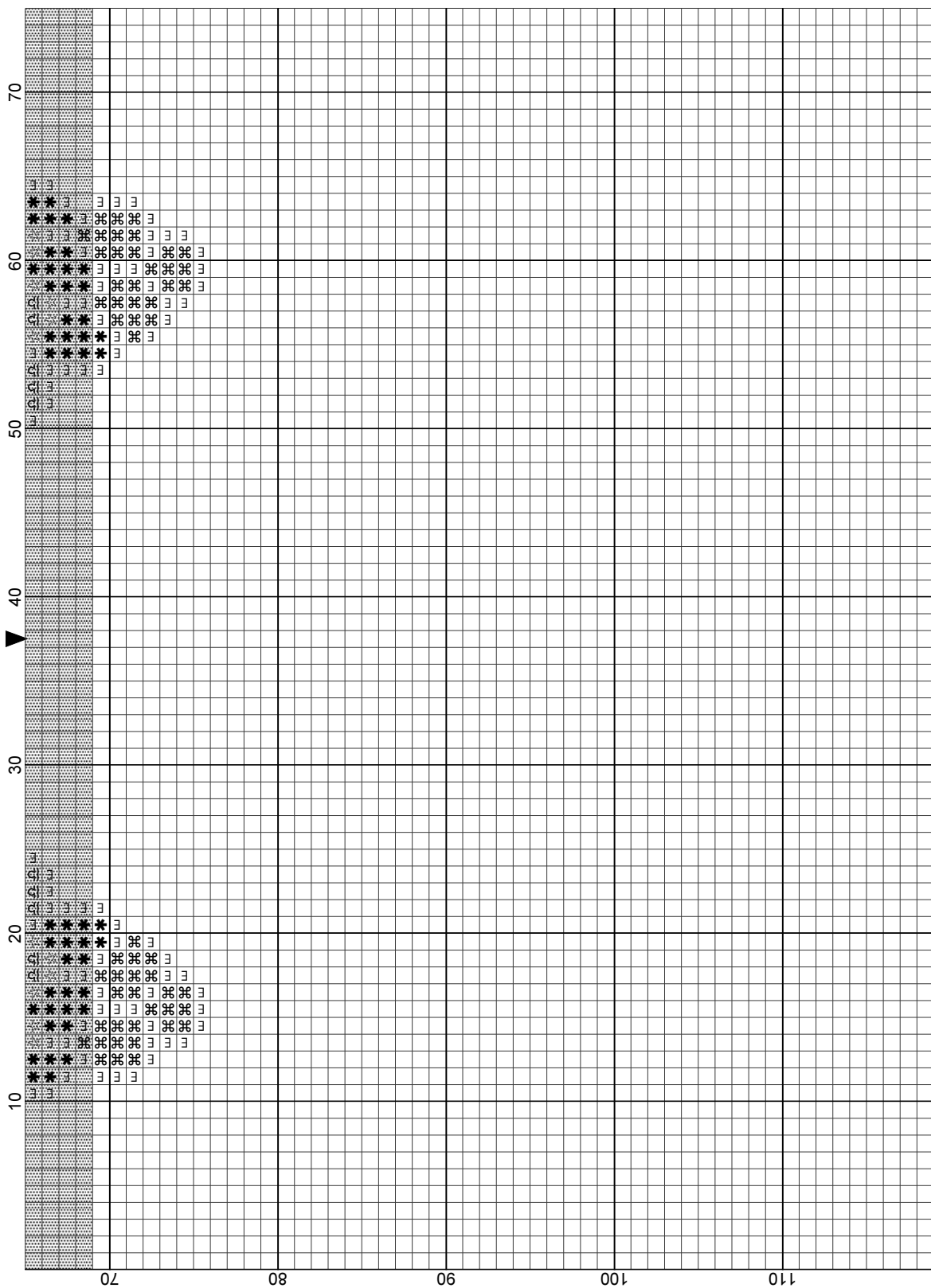




2023 Barbara Ana designs

- Legend:
-  DMC-598
  -  DMC-666
  -  DMC-727
  -  DMC-780
  -  DMC-958
  -  DMC-3808
  -  DMC-3810
  -  DMC-3852
  -  PTB-PB01
- Backstitches:
-  DMC-3852





2023 Barbara Ana designs

- Legend:
- DMC-598
  - DMC-666
  - DMC-727
  - DMC-780
  - DMC-958
  - DMC-3808
  - DMC-3810
  - DMC-3852
  - PTB-PB01
- Backstitches:
- DMC-3852