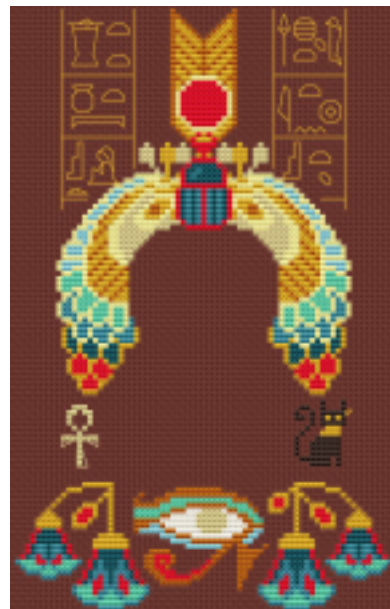




Barbara Ana
Designs



Grille mystère Cleo

Barbara Ana Astray Mendez

2ème partie

Toile: Toile de lin Belfast 12 fils/cm de Zweigart, coloris Dark Chocolate (9024)

Format brodé: 11.6 cm x 18.6 cm – 73 x 117 points

Fils à broder:

- Mouliné DMC
- Fil métallisé doré Rainbow Gallery Petite Treasure Braid (PB01 Bright gold) ou fil métallisé doré de votre choix

INSTRUCTIONS :

Point de croix:

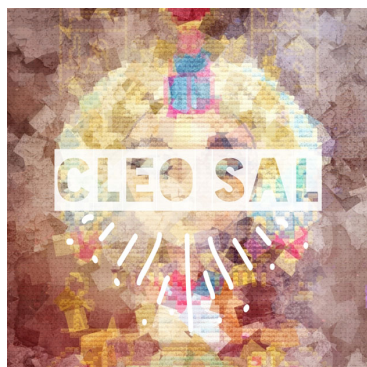
- 2 brins de Mouliné, brodé sur 2 fils de toile
- 1 brin pour le fil métallisé Rainbow Gallery Petite Treasure Braid

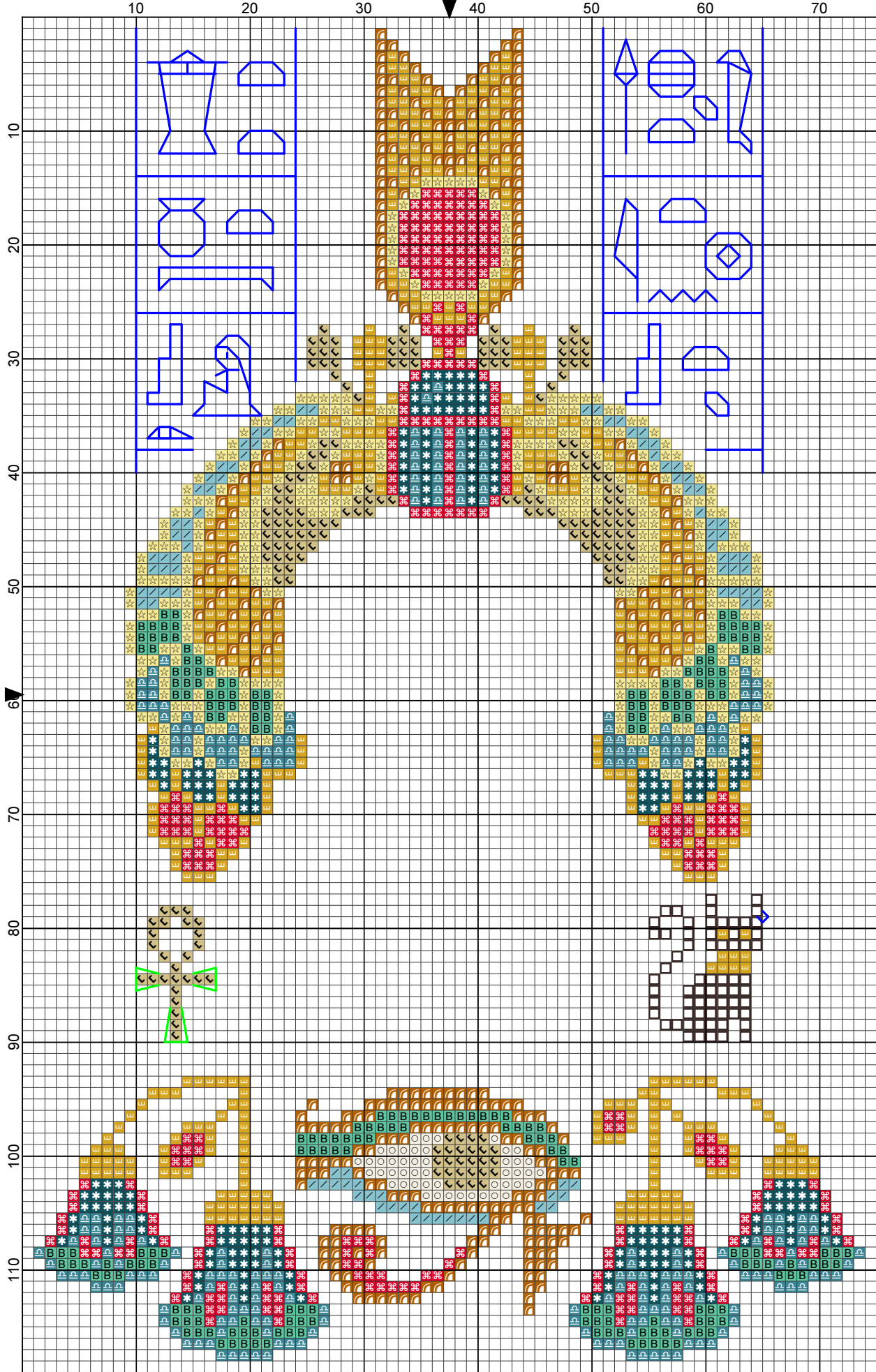
Point de piqûre:

- 2 brins de DMC 3371 (lignes rouges) et DMC 3852 (lignes bleues),
- 1 brin de fil métallisé Rainbow Gallery Petite Treasure Braid (lignes vertes)

DMC-300	DMC-666	DMC-780	DMC-839	DMC-975	DMC-3371	DMC-3810	DMC-3852	PTB-PB01
DMC-598	DMC-727	DMC-822	DMC-958	DMC-976	DMC-3808	DMC-3827	DMC-3855	

— DMC-3371 — DMC-3852 — PTB-PB01

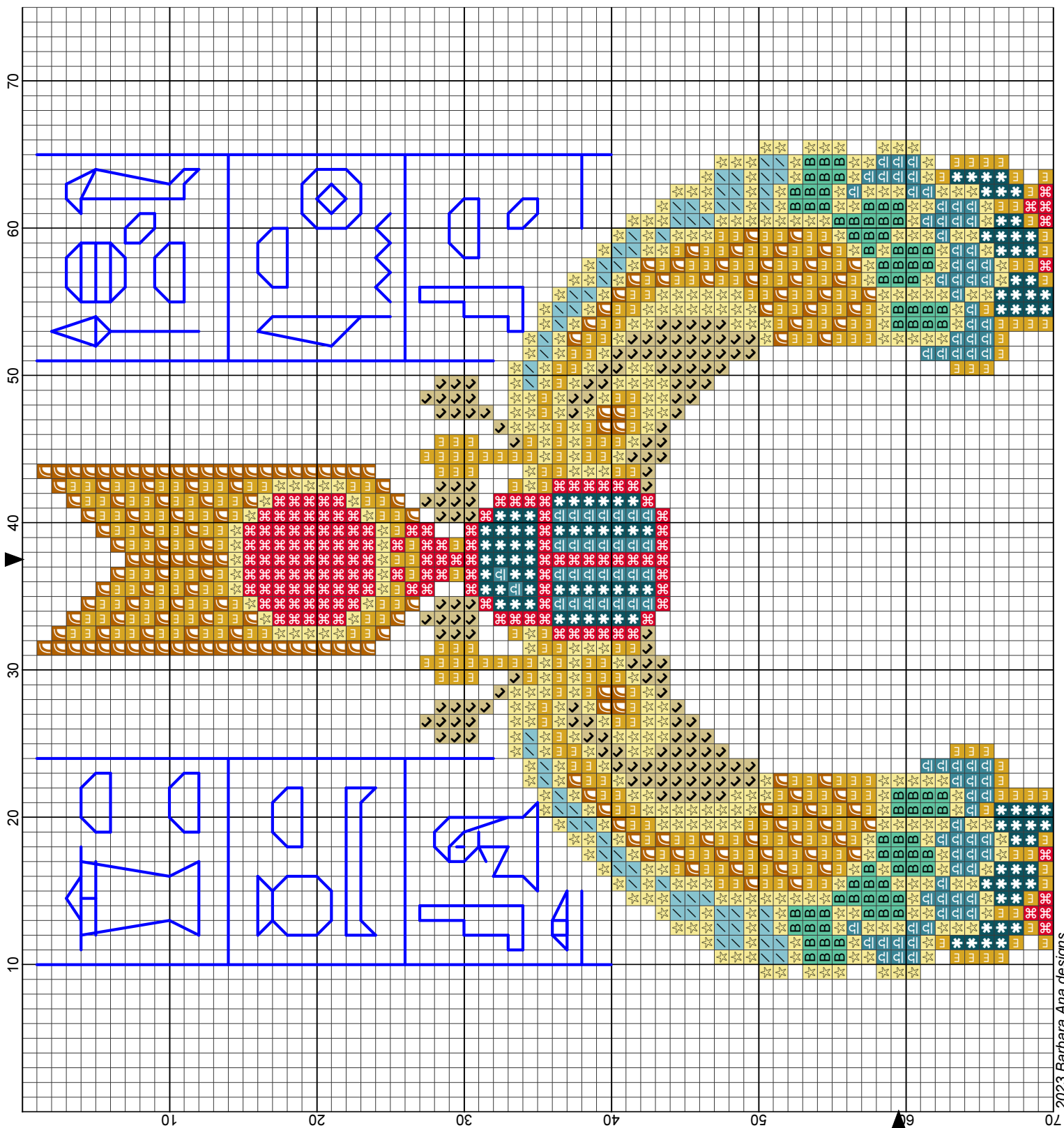


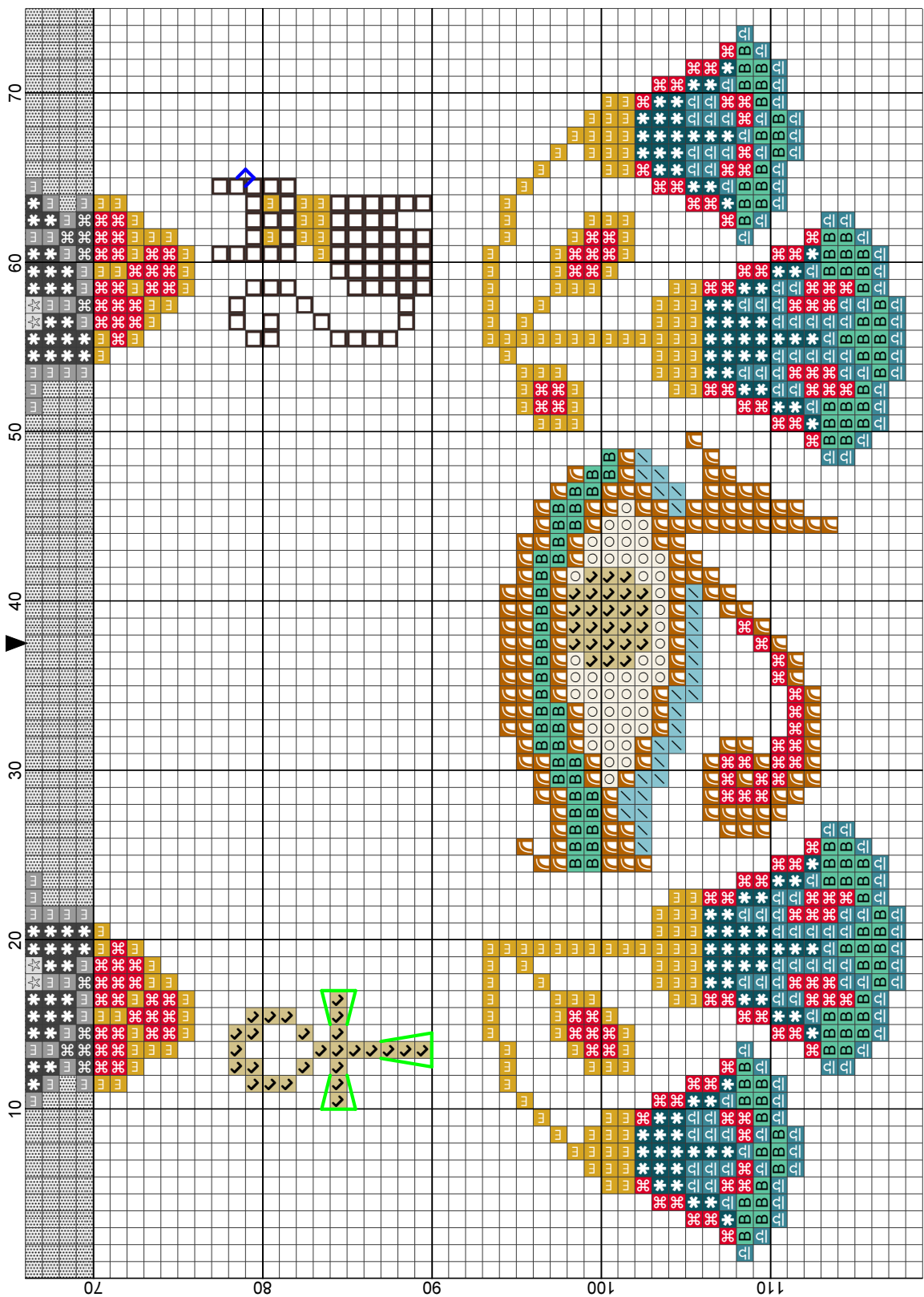


2023 Barbara Ana designs

- Legend:
- | | | | | | |
|--|--|--|--|--|--|
| | | | | | |
| | | | | | |

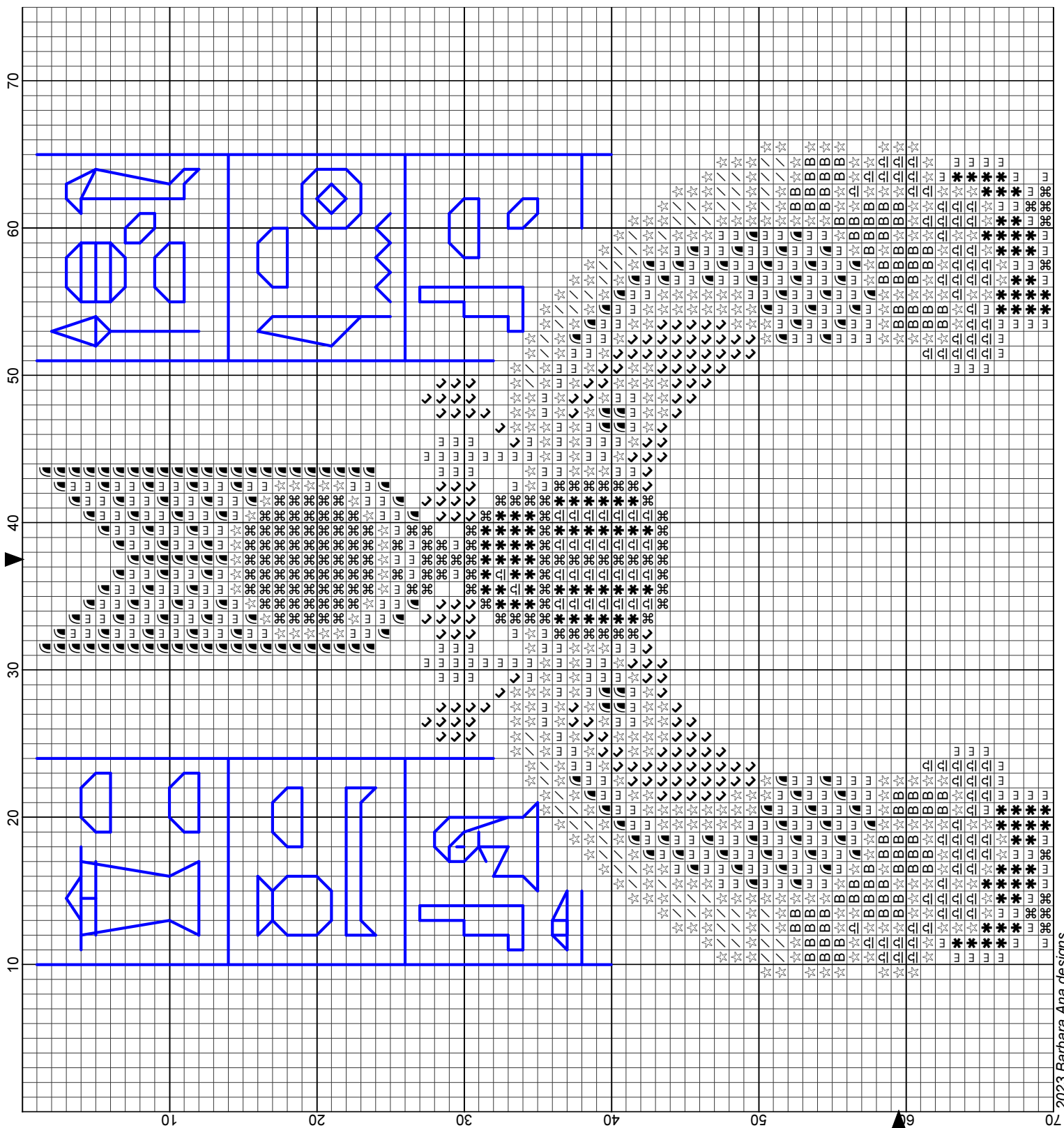
Backstitches:
 DMC-3852 PTB-PB01

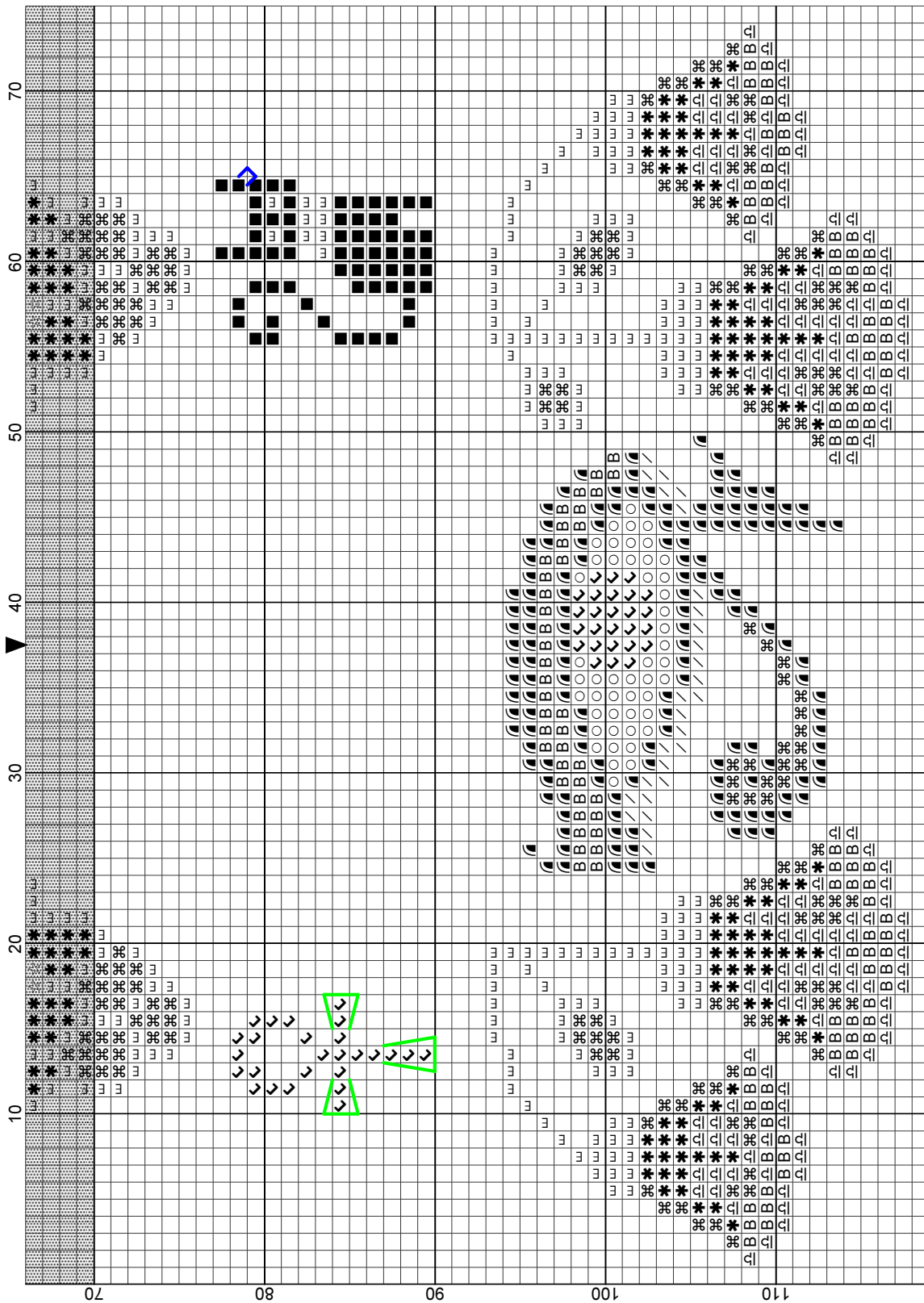




2023 Barbara Ana designs

- Legend:
- DMC-598
 - DMC-666
 - DMC-727
 - DMC-780
 - DMC-822
 - DMC-958
 - DMC-3371
 - DMC-3808
 - DMC-3810
 - DMC-3852
 - PTB-PB01
- Backstitches:
- DMC-3852
 - PTB-PB01





2023 Barbara Ana designs

- Legend:
- DMC-598
 - ⊞ DMC-666
 - ⊞ DMC-727
 - ⊞ DMC-780
 - DMC-822
 - ⊞ DMC-958
 - DMC-3371
 - ⊞ DMC-3808
 - ⊞ DMC-3810
 - ⊞ DMC-3852
 - PTB-PB01
- Backstitches:
- DMC-3852
 - PTB-PB01